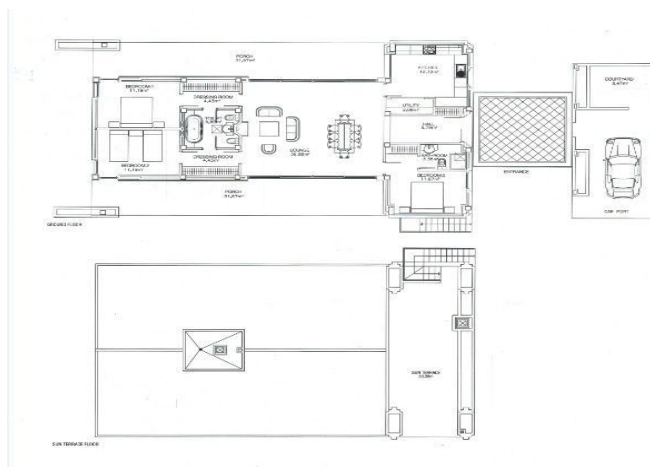




Detached Villa for sale in Sucina, Sucina

595 000 €

Referanse: Peraleja-Golf-5.1 Soverom: 3 Bad: 3 Plottstørrelse: 165m² Bebygget areal: 125m² Terrasse: 60m²





Huerta de Murcia, Sucina

La Peraleja Golf, villa 5.1, is a detached single-level villa overlooking the resort's 9th and 10th holes. The villa has three double bedrooms, one en-suite bathroom and one or two family bathrooms, an independent kitchen, and a spacious living room with a chimney. The double-height ceilings in the living room and bedrooms, with wooden roofs, provide an excellent indoor climate. Two large covered terraces are on each side of the living room and bedrooms. On top is a roof terrace with a beautiful view. The SW and NE-facing villas have a large swimming pool overlooking the Golf Course in the front garden. The back garden is spacious and gets afternoon and evening sun. There is a carport and off-road parking for 2-3 cars beside the main entrance. You overlook the fairway and green of the 9th hole, the tee and the fairway of the 10th hole from the front garden. The villa is sold key-ready, with the obligatory 10-year building guarantee; the buyer can choose their tiles and interior materials, among other things. The villa is 165 m2, constructed and sits on a 750 m2 plot. Peraleja Golf Resort has 24/7 security and is ideally located next to the RM-1 Motorway, a 15-minute drive to San Javier beaches, and 20 minutes to downtown Murcia. Five minutes away from Sucina, a charming village with several good restaurants, supermarkets, banks, and other services people need. La Peraleja Golf is located "door to door" to Hacienda Riquelme Golf Resort, less than 30 30-minute drive to nearly all other major Golf Resorts in the Murcia region. It is a 40-minute drive to Costa Blanca's most significant 4 Golf Courses. The golf course is being reformed and is planned to reopen in spring 2026. Everyone looks forward to the beautiful golf course being operational again. At Peraleja Golf, we can offer several other villas, completed and under construction, with 2-4 bedrooms, ranging from 67-165 m2, and plot sizes of 250-800 m2. Renderings Disclaimer: These images provided are conceptual renderings, not actual photos. They illustrate the intended completed design only and may differ from the final build due to material, finish, or site variations.[IW]



Egenskaper:

Solarium	Parking	Tipo Cocina
Ano Reforma	Tipo Suelo	Puerta Blindada
Amueblado	Sotano	Acceso Adaptado
Material Ventanas	Primera Linea	Contraventanas
Ano Construcccion	De Entidad Financiera	Vistas
Certificacion Energetica Letra	Trastero	Mascotas
Certificacion Emisiones Valor	Calefaccion	Certificacion Emisiones Letra
Persianas	Armarios Empotrados	Cocina Equipada
Num Planta	Certificacion Energetica Valor	Jardin
Chimenea	Amarre	Ascensor
Tipo Calefaccion	Reformado	Doble Acristalamiento
Conserje Portero Seguridad	Cocina Reformada	Tipo Ventanas
Terraza	Piscina	No Plazas Parking
Lavanderia	Garaje Incluido	Adaptado Silla Rueda
Tipo Agua	Garaje	